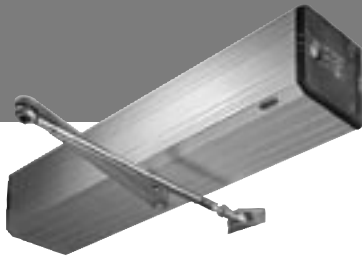


Opening Doors Worldwide!

Fire Door Operator  
SWINGDOOR Drive TDA.BS



★★★★★  
**TORMAX**  
AUTOMATIC



## No-Compromise Fire Protection

The fire door operator SWINGDOOR Drive TDA.BS is trendsetting in the application of new technologies for the automation of swing doors. The micro-processor, the powerful synchronous motor and the robust gear bring about a whisper-quiet swing door operator for the highest demands on tough, continuous operation. With the innovative “Teach-In” method, you program the desired motional sequence by manually guiding the door leaf through those steps. There is no need for time-consuming adjustments on the operator.

### Fire Protection Duty

In the event of fire, the smoke detector causes power to be cut immediately from the system. The door closes at once and locks. All safety facilities are deactivated. The door can still be opened with the door handle. The SWINGDOOR Drive TDA.BS then acts like an ordinary door closer with constantly monitored and controlled closing motions – even without power supply.

### Basic Module

- Electromechanical drive unit with AC synchronous motor
- Adjustable closing spring
- Connection terminals for sensors and safety devices
- Integrated 3-position control panel
- Serial interface RS 232 for connection to central control systems

### Standard Functions

- “Teach-In” program
- “Push-and-go” is triggered by pushing the door slightly
- Options for connection of:
  - Sensors and safety devices 24 VDC
  - Electrical openers operating at 24 VDC
- Activation through direction-specific sensors
- Time and/or step control for combined people and commodities traffic
- Recognition of obstacles in opening and closing direction

### Accessories/Options

- External 5-position TORMAX control panel with operating mode selection and fault diagnosis indication
- Impulse, presence and safety sensors for 24 VDC
- Position and condition feedback
- Cladding across the whole door width
- Smoke protection switch and smoke detector
- Electrical openers for fire doors
- “Close door” key

### Standards

- CE conformity
- Manufactured according to ISO 9001
- DIN 18263 part 4

### Technical Specifications

Closing torque adjustable in accordance with closer sizes	DIN 3 to DIN 6
Operator dimensions (L × H × D)	600 × 112 × 125 mm
Hold-open time adjustable	0–120 s
Mains supply	115 V AC / 60 Hz or 230 V AC / 50 Hz
Rated power min./max.	4–200 VA
Opening time adjustable *	40–100 %
Closing time adjustable *	20–100 %

\*depending on door size and leaf weight

### Maximum Door Leaf Weights

